

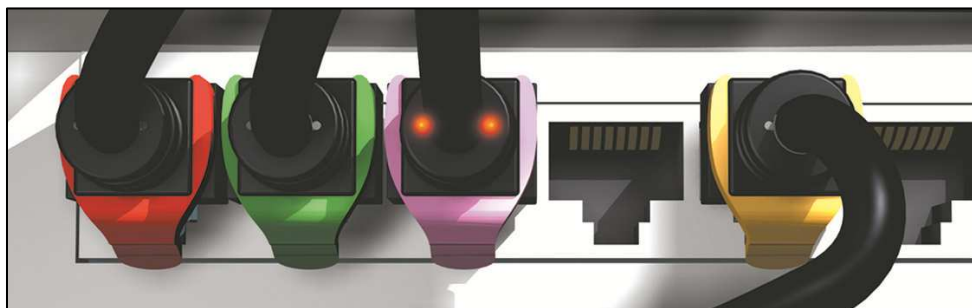
DirectPatch

Cat 6A FTP RJ 45

assemblies cables

Technical Data Sheet

Patent Pending



Cat 6 RJ 45 Patch Cords :

PatchSee RJ 45 Patch Cords are designed, and individual tested for connecting the network equipment to patch panel and network user outlet. They are warranted for cat 6A TIA/EIA-568-B-2.10 Channel test for transmission frequencies of up to 500 MHz and compatible with the 10 Giga applications.

PatchSee Concept and main characteristics

- Light identification by plastic optical fiber,
- Lengths 20 feet (6.1 m) up to 100 feet (30 m) in standard lengths, and up to 165 feet (50 meters) on specific demand,
- Color cable: Black with white marking,
- Color boot: Grey with white marking,
- Movable color clip, 16 colors available,
- Packaging: boxes of 1 piece by box,
- Available in cross patch cord,
- Marking on the boot: length and P/N,
- Unique serial number marking on the cable,
- Warranty 25 years for Channel Cat 6A link,
- Individual tested: each Patch Cord is individual tested (Return Loss, Attenuation, NEXT, etc...) and all the reports tests are archiving on computer database.

Technical Data Sheet

Construction

Number of pairs	4
Type	U-FTP (STP)
Conductor	Stranded bare copper wire
AWG	26
Insulation	Foam Skin Polyethylene
Individual pair screen	Al-laminated metal pair foil
Pair screen	n a
Optical wave guide	2 POF 0.5 mm up to 32 feet, 0.75 mm for length bigger than 32 feet
Drain	Stranded drain wire tinned
Jacket	LSOH Black with white printing (LSOH : IEEC 60332-3 Cat C, Low Smoke : IEEC 61189-2C12, Halogen Free : IPC4101-A)
Overall diameter	6.2 mm
Plug housing	UL 1863 Polycarbonate 2 levels with management bar
Contacts	Moved contacts
Contact Plating	50 μ inches gold minimum (1.2 μ m)
Shielding	Tin-plated

Mechanical Properties of the cable

Fire Propagation Test	Temperature range During operation	Fire load	Bending radius
UL 444 VW 1 Flame test	-20°C up to +75°C	372 MJ/km	>25 mm without load

Electrical Properties of the cable (at 20°C +/- 5°C)

DC loop resistance	Insulation resistance (500V)	Capacitance at 800 Hz	Impedance 1-100MHz	Impedance 100-250MHz	Propagation delay	Test voltage (DC, 1 min)
< 340 Ω /km	> 2000 M Ω *km	Nom. 43nF/km	100 +/- 15 Ω	100 +/- 15 Ω	< 427 ns/100m	1000 V