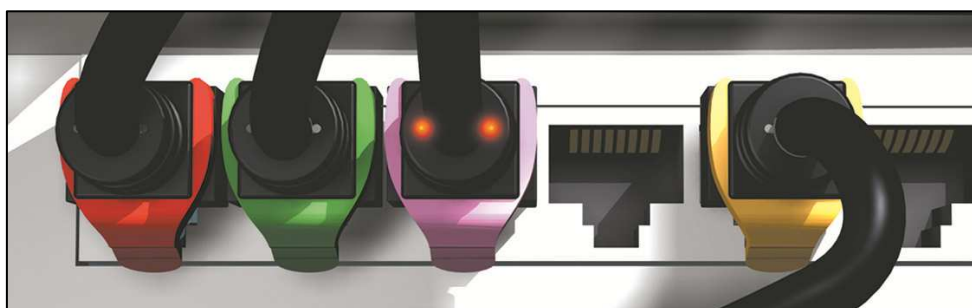


Class 6 Patch Cat 6 U/FTP patch cords

Technical Data Sheet

Patent Pending



Cat 6 RJ 45 Patch Cords :

PatchSee RJ 45 Patch Cords are designed, and individual tested for connecting the network equipment to patch panel and network user outlet. They are warranted for cat 6 TIA/EIA-568-B-2.1 June 2002 Channel test on a Permanent Link certified for transmission frequencies of up to 250 MHz.

PatchSee Concept and main characteristics

- Light identification by plastic optical fiber,
- Many lengths 2 feet (0.6 m) up to 16 feet (4.9 m) for patch panel and terminal link,
- Color cable: Black with white marking,
- Color boot: Grey with white marking,
- Movable color clip, 16 colors available,
- Packaging: boxes of 6 or 12 pieces, depending of the length,
- Available in cross patch cord,
- Marking on the boot: length and P/N,
- Unique serial number marking on the cable,
- Warranty 25 years for Channel Cat 6 link on Cat 6 Permanent Link certified,
- Individual tested: each Patch Cord is individual tested (Return Loss, Attenuation, NEXT, etc...) and all the reports tests are archiving on computer database.

Technical Data Sheet

Construction

| | |
|-------------------------------|--|
| Number of pairs | 4 |
| Type | U/FTP |
| Conductor | Stranded bare copper wire |
| Gage | 26 AWG |
| Insulation | Foam Skin Polyethylene |
| Individual pair screen | Al-laminated metal pair foil |
| Pair screen | n a |
| Optical wave guide | 2 POF 0.5 mm |
| Drain | Stranded drain wire tinned |
| Jacket | LSOH Black with white printing |
| Overall diameter | 6.2 mm |
| Plug housing | UL 1863 Polycarbonate 2 levels with management bar |
| Contacts | Moved contacts |
| Contact Plating | 50 μ inches (1.2 μm) |
| Shielding | Tin-plated |

Mechanical Properties

| Fire Propagation Test | Temperature range During operation | Fire load | Bending radius |
|------------------------------|---|------------------|-----------------------|
| UL 1581 VW 1 Flame test | -20°C up to +60°C | 372 MJ/km | >25 mm without load |

Electrical Properties (at 20°C +/- 5°C)

| DC loop resistance | Insulation resistance (500V) | Capacitance at 800 Hz | Impedance 1-100MHz | Impedance 100-250MHz | Propagation delay | Test voltage (DC, 1 min) |
|---------------------------|-------------------------------------|------------------------------|---------------------------|-----------------------------|--------------------------|---------------------------------|
| < 340Ω/km | > 2000 MΩ*km | Nom. 43nF/km | 100 +/- 15 Ω | 100 +/- 22 Ω | < 427 ns/100m | 1000 V |