

VXC™ Coupler

APPLICATION

The Leviton VXC Coupler is a cost-effective solution for installing WAPs, cameras, or other IoT devices. The coupler connects two pieces of Cat 6A cabling, giving installers the ability to install and test a permanent link or MPTL, while keeping the flexibility to fine-tune the placement of the final device.



SPECIFICATION

Coupler shall meet or exceed requirements for CAT 6A performance described in ANSI/TIA 568.2-D and ISO 11801. It shall require no proprietary tools for termination. Shall be NFPA-70 plenum rated for use in air-handling spaces. Coupler shall be component rated and body shall be constructed of zinc alloy. Shall work in either UTP or shielded channels.

COUNTRY OF ORIGIN

Taiwan

FEATURES

- Cat 6A rated, backwards compatible for Cat 5e and Cat 6 applications
- NFPA-70 Plenum rated
- T568A or T568B application
- UTP or shielded installations
- Cat 6A component rated
- Compatible with 22-26 AWG cables solid and stranded
- Termination does not require any proprietary tools
- Durable zinc alloy body

STANDARDS & REGULATIONS

- ANSI/TIA-568.2-D Cat 6A
- ISO 11801 Class E_A
- ANSI/TIA-1096-A
- NFPA-70 CMP rated
- IEEE 802.3bt PoE Type 1 (15.4 Watts) formerly 802.3af, Type 2 (30 Watts) formerly 802.3at, Type 3 (60 Watts), Type 4 (90 Watts)
- Cisco UPoE (60 Watts), UPoE+ (90 Watts)
- Power over HDBaseT™ PoH (95 Watts)

DESIGN CONSIDERATIONS

- Cable support needed within 12" of installed coupler to reduce stress
- Coupler is plenum rated for installation above a drop ceiling or in other air handling spaces
- Coupler can be used to connect a horizontal cable to a single-ended patch cord to create a Modular Plug Terminated Link (MPTL)
- Coupler can be utilized as a single cable consolidation point

MECHANICAL SPECIFICATIONS

Housing: Zinc Alloy

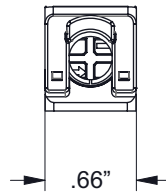
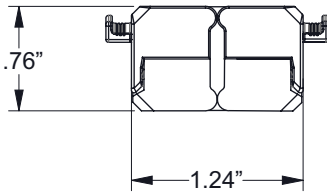
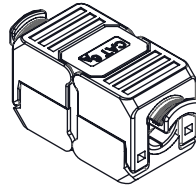
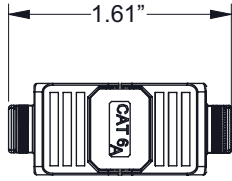
WARRANTY INFORMATION

For Leviton product warranties, go to leviton.com/warranty

PRODUCT SPECIFICATIONS
SBCPI-00S



SBCPI-00S



CABLE COMPATIBILITY

| Cable Type | Cable AWG | Compatible with Coupler |
|------------|-----------|-------------------------|
| Solid | 28 | No |
| | 26 | Yes |
| | 24 | Yes |
| | 22 | Yes |
| Stranded | 28 | No |
| | 26 | Yes |
| | 24 | Yes |
| | 22 | Yes |

PATCH CORD COMPATIBILITY CHART

| | CMR | CMP | LSZH |
|--------|-------|-------|--------|
| Cat 6A | 6AS10 | 6ASPO | AC6PCF |

PART NUMBER

| Description | Part No. |
|--------------|-----------|
| VXC™ Coupler | SBCPI-00S |

For further support information, visit leviton.com/ns/support

NETWORK SOLUTIONS GLOBAL HEADQUARTERS

Bothell, WA, USA | leviton.com/ns
 (800) 824 3005 / +1 (425) 486 2222 | appeng@leviton.com

NETWORK SOLUTIONS EUROPEAN HEADQUARTERS

Glenrothes, UK | leviton.com/ns/emea
 +44 (0) 1592 772124 | customerserviceeu@leviton.com

Leviton is dedicated to designing, developing and manufacturing sustainable high-performance structured cabling and speciality cabling solutions. Network Solutions products are available worldwide in over 100 countries. Visit us online to learn more.